

“Notes from the Nest” is a weekly, informational email highlighting upcoming events. It is sent out on Fridays.

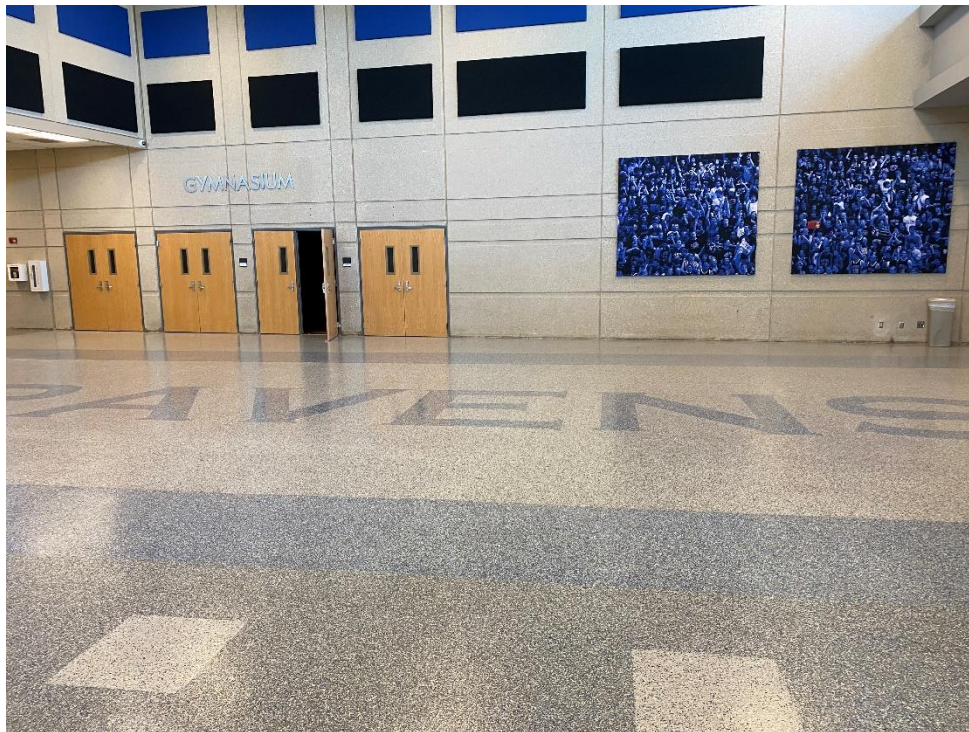
**July 22, 2022**

Some corrections from last week are highlighted below in **yellow**.

### **Summer work at ONW**

More flooring work is being done at ONW, replacing the square tile from the Commons to the east entrance by the band room. This leaves only the North hallway from the Commons to the east entrance, Art hallway, and Engineering hallways left to complete the entire building.

The Events Entrance has some additional “flair” on the floor.



## **Counseling information**

Please note that there are two weekly communications from ONW. The other is the “ONW Student Services Newsletter.” There may be some overlap in what is included in these and there definitely will be some information that is only communicated in one or the other. In other words...read them both! ☺ The Student Services Newsletter is sent on Monday afternoons at about 4pm and will usually come from Heather Jasper. I have attached a copy of the July 18 edition so you know what it looks like and what to look for.

## **Registration**

ONW Registration is completely online for any returning students.

Online registration for Olathe families opened July 7. Parents are able to complete all registration materials for their children for the 2022-23 school year entirely online. Demographic information can be updated, notifications can be approved, and fees can be paid through the district's online registration process.

Beginning on July 7, parents are able to sign into their ParentVUE account at <http://parentvue.olatheschools.com>. There they will be able to complete all the necessary registration documents for each of their children, including making sure contact information is up-to-date. Please note: online registration cannot be done on a cell phone. It must be done on a desktop computer or laptop.

They can visit their child's school for help with the registration process or they can call the district's Registration Helpline at 913-780-7781, starting on July 7.

**Parents are encouraged to enroll their children by the end of the day on July 28.**

Paying fees -

Immediately following completion of registration on ParentVUE, parents will be able to access Touchbase at <https://ks-olathe.intouchrecepting.com> to pay fees.

## **Raven Parent Organization – RPO**

ONW Parents,

The Raven Parent Organization (RPO) is ONW's version of a PTA, supporting a number of activities and initiatives. One of the events that has historically been very impactful on our students is the Bill Cordes-School Unity Project, which has been scheduled for August 24th. After that we'll be diving right into Homecoming and all the other school activities that RPO helps support. In order to do this, we need your help! There is a suggested donation of **\$50 per family** to the Raven Parent Organization to ensure that we are able to continue supporting these events and so many others that directly benefit all of our students. Any donation amount is truly appreciated!

For more information about RPO or to make a donation, please visit <https://www.olatheschools.org/Page/7708>.

The following are contact points for our Raven Parent Organization.

Facebook: Raven Parent Organization

Twitter: @ONWRavens\_RPO

Instagram: @onwravensrpo

## **Olathe Northwest 2022-23 Student Schedules and Building Open**

Olathe Northwest student schedules will be available on Friday, July 29, 2022 by:

- Accessing Student Vue or Parent Vue
- Coming to ONW's front office and requesting a printed copy (on or after Monday, August 1)

Students may only pick up their own schedules; we cannot give schedules to students for their friends or siblings.

ONW students, particularly those who are new to the building, are welcome to walk their schedule/the building on Monday, August 1, from 12pm to 4pm or Thursday, August 4, from 8am to 4pm.

### **2021-22 Yearbook**

With our traditional yearbook distribution in late July, we wanted to let you know that we have not received our 2022 yearbooks yet. Once they have been received, we will notify of a distribution date.

### **2022-23 School pictures**

9<sup>th</sup>-12<sup>th</sup> grade students will have their school pictures for IDs, parent purchase, and yearbook taken on Wednesday, August 17 or Thursday, August 18. Once a schedule has been developed for which classes will have pictures on which day, we will share that.

### **Back to School Night**

On Thursday, August 11, we will host our Back to School Night/Open House for parents to learn what their student's experience will look like this year and meet teachers. We will start at 6:45pm with 1<sup>st</sup> hour and work through the traditional school day. The academies traditionally meet with freshmen and new parents at 6pm that evening.

### **Lockers**

Hall lockers will be available for students to request this school year. Students received an email with the link to request a locker early this week (Monday, July 18). Students requesting a locker will

keep that locker for the duration of their time at ONW. Lockers should be requested prior to July 28, though there will be another window of opportunity after school starts in August.

We do allow students to carry totes or backpacks during the school day in the high schools in Olathe.

Once lockers have been assigned, the locker number and combination will be viewable by students when logging into StudentVue.

## Homecoming dates

### **HC week – October 3-8**

Wednesday, October 5 – Powderpuff game and Bonfire

Thursday, October 6 – Parade and assembly

Thursday, October 6 – Football game against Shawnee Mission East at 7pm at CBAC

Friday, October 7 – no school

Saturday, October 8 – Homecoming Dance from 8pm to 11pm at ONW

## Fall Sports

Please note that the fall sports season starts on Monday, August 15, after classes begin. A current physical form (completed after May 1, 2022) must be turned in prior to participating. Physical forms are available in the office or at <https://www.olatheschools.org/Page/9564>.

As we transition into the 2022/2023 school year of Athletics and Activities, the district will be to moving to an online format to submit **Pre-Participation Physical, Concussion, Substance Abuse, and Transportation forms**. Please follow the steps listed below to help you complete this process.

- 1) Each student/ family will need to log into their Touchbase account: <https://ks-olathe.intouchrecepting.com/> (this is the same account you login into to register for summer weights, or pay fees for the upcoming school year).
- 2) Once logged in select the 'Registrations' tab. This will give you the choice to choose a sport/activity that you would like to try out, play or participate in next year.
- 3) Next, you will see steps to access all the forms that need to be submitted for participation. **The Pre-Participation Physical packet will need to be printed and brought to your doctor appointment.**
- 4) After completing the physical packet and all pages needing signatures are signed, you can now scan and upload (**5 total pages**) to Intouch registrations. Please make sure all 5 pages are scanned before you upload. The concussion form, substance abuse, and transportation forms are to be signed electronically. No need to print these forms to submit.
- 5) Last step is to submit forms for approval. Once approved you will receive an confirmation email letting you know that your forms were submitted successfully.

- 6) If you will be participating in multiple sports or participating in a club or committee, you will need to go back to the registration page again and choose another sport or activity to register.

If you have any questions please contact Karen Sheets in the Athletics at [kcsheets@olatheschools.org](mailto:kcsheets@olatheschools.org)

Football Head Coach – Lorne Clark ([lclarkonw@olatheschools.org](mailto:lclarkonw@olatheschools.org))  
Soccer Head Coach – Chris Graham ([cgrahamonw@olatheschools.org](mailto:cgrahamonw@olatheschools.org))  
Cross Country Head Coach– Chris Sales ([christinesonw@olatheschools.org](mailto:christinesonw@olatheschools.org))  
Girls Golf Head Coach – Michael Grove ([mgroveonw@olatheschools.org](mailto:mgroveonw@olatheschools.org))  
Girls Tennis Head Coach – Drew Smith ([dasmith@olatheschools.org](mailto:dasmith@olatheschools.org))  
Volleyball Head Coach – Barry Lenth ([brlenth@olatheschools.org](mailto:brlenth@olatheschools.org))

### Upcoming dates

July 29 High school schedules released via StudentVue/ParentVue  
August 1 ONW open for students to walk schedule (12pm-4pm)  
August 1 Standard school office hours resume (7:30am-3:30pm, Monday through Friday)  
August 4 ONW open for students to walk schedule (8am-4pm)  
August 9 Freshman Parent Orientation 6pm (ONW auditorium)  
August 11 Only Freshmen attend (dismissal at 12:15pm) – busses run at normal time in the morning and at 12:15pm  
August 11 ONW Open House/Back to School Night, 6:45pm  
August 12 First full day of school (grades 9-12)  
August 15 Fall Sports practice begins  
August 17 School pictures for grades 9-11, seniors will take an ID only picture  
August 18 School pictures for grades 9-11, seniors will take an ID only picture  
August 26 Back to school mixer (9pm-11pm, after soccer game vs OE at CBAC)  
September 2 Student early release (11:15am)  
September 5 No school – Labor Day  
September 6 No school – Professional development day  
September 13 Class of 2025 Awards Breakfast – invitations to honorees will be sent in August  
September 14 Class of 2024 Awards Breakfast – invitations to honorees will be sent in August  
September 16 Class of 2023 Awards Breakfast – invitations to honorees will be sent in August  
October 3-8 Homecoming Week  
October 5 Powder Puff/Bonfire  
October 6 Homecoming Parade  
October 6 Last day of 1<sup>st</sup> quarter  
October 7 No school – professional development  
October 8 Homecoming Dance from 8pm-11pm at ONW