

Planning for College & Finding the Right Fit



Dana Blubaugh
Pittsburg State University

Dana Bolar
Wichita State University

Get Started Early

- What will you do when you graduate?
- Begin gathering information on schools that offer your program of interest.
- There are over 50 college choices in Kansas!

Know Your Choices

- Technical Schools
- 2 year Public Colleges
- 2 year Private Colleges
- 4 year State Universities
- 4 year Public Colleges and Universities
- 4 year Private Colleges and Universities

Identify Your Abilities & Interests

- What are your skills and talents?
- What classes have you enjoyed the most during your high school career?
- Would you like to work with people, things or ideas?



Know What Factors to Consider

- Is the college's location important?
 - Close to home
 - Far from home
- Would you prefer living on-campus or commuting from home?
- What size of college do you prefer?
 - Small (100-2,000)
 - Medium (2,000-10,000)
 - Large (10,000 or more)
- What size of town are you looking for?
 - Small town
 - Large, city environment



Factors to Consider (cont'd)

- What type of college are you considering?
 - Community College
 - 4-year (Private or Public)
 - Technical/Trade School
- Will participating in specific extracurricular activities be important in your decision?
 - Student Government
 - Religious Organizations
 - Sports
 - Fraternities and Sororities

Factors to Consider (cont'd)

- What are the Admission Requirements?
 - ACT/SAT scores, GPA, coursework, etc.
 - Deadlines
 - Essays or Interviews
 - Decision process
- Does the college accept your AP courses or other college credits you've already earned?
- Is accreditation of the academic program/institution important to you?
- Will each institution equally prepare me for my career choice or help me choose a career?

Know the Cost of Your Education

- Tuition and Fees
- Room and Board
- Books
- Travel Expenses
- Personal Expenses



Can I Afford it?

- Don't rule out a school based on their cost of attendance alone
- Consider this:
 - Financial Aid amounts are based on the cost of attendance for each individual school
 - Cost of Attendance charts
 - Scholarships and Grants could be available



Financial Aid

- FAFSA
 - Typically can be filed beginning in fall or winter
 - Priority deadline is usually March 1 or April 1 at schools
 - <https://studentaid.gov/>
- Financial Aid Offices at colleges & universities
 - Often list Federal Aid information & links
 - Will help families budget and plan for college
 - Explains financial aid eligibility, how to understand your aid & how to accept scholarship and grants
 - Great to include appointment with Financial Aid on campus visits!
 - <https://studentaid.ed.gov/sa/home>
- Scholarship Websites
 - www.fastweb.com
 - www.scholarships.com
 - <https://www.vuscholarships.com/>

Utilize Your Resources

○ High School Counselor

- Reference Books
- Institutional Viewbooks/Brochures
- Personal Knowledge

○ College Admissions Counselors

- Check the calendar in the Guidance Office
- Sign-up in advance to meet with reps (depending on school policy)
- Pay attention to presentations
- We get paid to help you!

Online Resources

- Reliable Internet Sources
 - High School Website
 - Individual College/University Website
 - Catalog
 - Virtual Tours
 - The College Tour (Amazon Prime)
 - Admission requirements
 - Academic information
 - Costs (“Net price calculator”)
- College Board: www.collegeboard.org



Do Your Research

- What are the requirements for admission?
 - View the school website for details
 - Contact the Admissions Office
- What is the application deadline?
 - Some schools will have deadlines, others will not
- How selective is the school?
- Apply to your top 3-5 choices
 - It is better to be prepared for each school rather than playing “catch up” later

College Planning Conferences (CPCs)

- Put the date on your calendar
 - Check with your counselor for dates (typically in fall & junior fairs in spring)
- Decide which schools you want to visit with at the CPC and stop by their tables
- Write down questions in advance so you can ask them of each representative you visit with
- Complete the contact cards or QR Code
 - Labels or www.strivescan.com
- If time allows, visit with other schools
- When you get home, read and sort the brochures, scan QR codes to get on mailing lists

Visit Campus

- Personal visit vs. Campus Event
- Spring breaks & weekends are convenient, but may not be as in-depth or true depiction of campuses
- Set up an appointment with the Admissions Office in advance
- Visit when school is in session
- Wear comfortable clothing and shoes
- Check your schedule for the day
 - Are you meeting with faculty, financial aid, going on a campus tour, looking at housing options?
 - Allow extra time to explore!
- Notify the school if you won't be able to attend
- Don't just do a "drive through"



Start the Admission Process

- Complete an Application for Admission
- Pay the Application Fee
 - Fees will range from \$0 - \$50
 - Apply Kansas Free App Days in October but some KS colleges don't have fee any time
- Submit Your Information
 - ACT or SAT Scores
 - High School Transcript and Senior Class Schedule
 - College Transcripts
- Note Any Other Documents You Need to Send
 - Letters of Recommendation, Interviews or Essays, Activity Chart or Resume
 - Create a Professional E-mail and Check it
 - Use for Applying Online, Contacting Schools, and Scholarships

Social Media

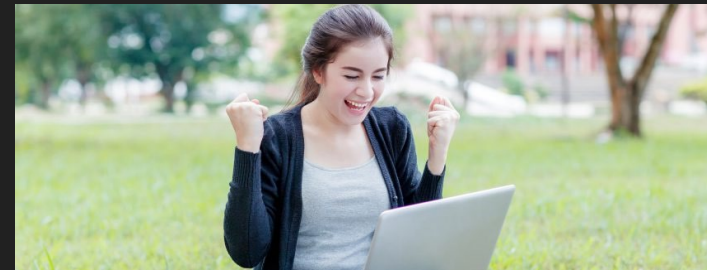
○ Use Social Media Wisely

- Review your privacy settings and make changes if needed
- Review your photos and remove any albums or tagged photos that are not appropriate
- Do not post blogs, notes, or make derogatory wall comments about colleges especially if you choose not to limit your privacy.



After You Have Been Accepted

- Celebrate!
- Make Housing Arrangements
 - Learn your school's requirements
- Complete the FAFSA
- Enroll in Classes
 - Many schools have orientation programs
- Take Care of All Deposits
- Notify Other Schools of Your Decision
 - Don't feel bad for deciding that another school is a better fit for you.



Remember. . . it is YOUR Future!

- Be sure to avoid:
 - Deciding not to apply to a school because you think you won't be accepted
 - Procrastination
 - Letting others make the choice for you



In Review

- Get started EARLY
- RESEARCH your options
- Attend COLLEGE PLANNING CONFERENCES
- VISIT the colleges you're considering
- APPLY for admission
- Check in with your Admissions Rep
- Check into FINANCIAL AID
- Make HOUSING arrangements
- ENROLL in classes



Questions?



Dana Blubaugh
Pittsburg State Admissions
Representative
dblubaugh@pittstate.edu
620-687-0480



Dana Bolar
Wichita State Admissions
Representative
dana.bolar@wichita.edu
316-358-2366