



# Olathe Public Schools Middle School Program Planning Guide 2024-25





## Student Guiding Principles

### Honesty

Truthfulness to oneself and others in both words and actions



### Respect

Treating others as you wish to be treated

### Responsibility

Doing what you're supposed to do when it needs to be done, even when no one is watching

### Trustworthiness

Exhibiting dependable behaviors

## Parent/Patron Guiding Principles

### Positive Role Models

Setting a good example in words and actions



### Effective Communicators

Actively listening, seeking to understand and proactively interacting with children and other adults

### Respect For All

Treating all others as you wish to be treated

### Advocates For Education

Demonstrating the importance of learning and encouraging academic and personal excellence

### Active Involvement

Making children a priority by being informed and participating in all aspects of the lives of our children

## Staff/Board Guiding Principles



- Children First
- Respect for All
- Teamwork
- Excellence & Quality
- Commitment to Individual Needs

Olathe Public Schools is a partnership of staff, students, parents, and the community.

## Our Vision

Students prepared for *their* future!

## Our Mission

To provide a safe, positive environment where all students acquire knowledge and skills to be productive citizens.

# Students Prepared for *Their* Future

# Welcome to Middle School!

We share your excitement as you begin the planning process for middle school. This Program Planning Guide has been developed to provide information for you and your parents to process together, discussing the required classes as well as the elective classes. You will note that middle school offers many opportunities to “explore” new areas of study. Depending on individual need and levels of development, you will have an opportunity to strengthen skills through advanced levels of course work as well as to take part in a wide range of academic support programs.

**The Middle School Day** Students attend seven classes, with an Academic Extension period for 30 minutes each day. The Academic Extension period is used for getting support/assistance from a teacher, small “targeted skill” group instruction, student clubs, homework, make-up work, pep assemblies and more.

**Teaming** Students are taught by a team of teachers who coordinate instruction and routines to address student needs. Teams are by grade level.

## Which Courses are Required?

Sixth graders must take 5.5 - 6 credits of required classes, and 7th and 8th graders 5 - 5.5 credits of required classes. Required classes include:

- \***CORE** Every student takes a “core” curriculum of four year-long classes in Language Arts, Math, Science, and Social Studies. Math class placement is based on the following district criteria: 1) district and state assessment results, 2) MAP scores, 3) current course performance.
- \***Literacy/Reading** In addition to their core subjects, students take a required Literacy/Reading class every year. Students’ prior performance on reading and writing tasks is considered when determining their class placement.
- \***Physical Education and Health** Health is integrated into students’ physical education classes. Sixth graders take a year-long Physical Education/Health class, while 7th and 8th graders take P.E./Health one semester of each school year. Students selected for the dance team or cheerleading squad during 7th and/or 8th grades substitute a year-long Cheerleading/Health class or Dance Team/Health class for their semester-long P.E./Health class.
- \***Academic Support Classes** Some students may benefit from academic support or enrichment beyond the required courses. Enrollment for these courses are determined on an individual basis by the student’s team. Contact your student’s school counselor for additional information.

## Elective Courses

Elective courses are used to complete the students schedule after the required courses are placed. Students request elective courses as well as elective course alternates, to be used if first-choice courses conflict or are unavailable.

***\*Beginning in the 2024-25 school year - Students in 8th grade who enroll in Spanish I or French I will earn high school credit. Those courses will be included on their high school transcript and cannot be removed. Credits will be added after the start of the student’s ninth grade year.***

# Overview of Middle School Courses Grades 6-8

## Grade 6

### CORE (Required)

Language Arts 6  
Literacy 6 (.5) or Reading 6 (.5 - 1.0)  
Math 6 or Math 6 Plus  
Science 6  
Social Studies 6

### Physical Education/Health (Required)

Physical Education/Health (1.0)

### Academic Support

ELL  
Guided Study  
QUEST (gifted)  
Resource

### Elective Courses

Band 6 (1.0)  
Choir (.5 or 1.0)  
Communications/Multi-Media 6 (.25)  
Computer 6 (.25)  
Exploring Art (.25)  
Flight & Space (.25)  
Focus On FACS (.25)  
French 6 (.25)  
Leadership Today 6 (.25)  
Orchestra 6 (1.0)  
Spanish 6 (.25)  
Theatre 6 (.25)  
World Language Exploratory (.25)

## Grade 7

### CORE (Required)

Language Arts 7  
Literacy 7 (.5) or Reading 7 (.5 - 1.0)  
Math 7 or Math 7 Plus  
Science 7  
Social Studies 7

### Physical Education/Health (Required)

Physical Education/Health (.5)  
Cheerleading/Health (1.0)  
Dance Team/Health (1.0)

### Academic Support

ELL  
Guided Study  
QUEST (gifted)  
Resource

### Elective Courses

Art I (.5)  
Art II (.5)  
Automation and Robotics (.5)  
Band 7 (1.0)  
Career and Life Planning (.5)  
Choir - Tenor/Bass (1.0)  
Choir - Treble (1.0)  
Choir Ensemble (1.0)  
Communications/Multi-Media (.5)  
Computer Applications I (.5)  
Computer Applications II (.5)  
Design & Modeling (.5)  
Focus on French (.5)  
Focus on Spanish (.5)  
Introduction to Computer Coding (.5)  
Introduction to Apparel Production (.5)  
Introduction to Culinary I (.5)  
Introduction to Culinary II (.5)  
Introduction to Fashion, Apparel & Interior Design (FAID) (.5)  
Jazz Band (.5)  
Leadership Concepts (.5)  
Orchestra 7 (1.0)  
Spanish for Heritage Speakers (.5)  
Stagecraft (.5)  
Theatre I (.5)  
Theatre II (.5)

## Grade 8

### CORE (Required)

Language Arts 8  
Literacy 8 (.5) or Reading 8 (.5 - 1.0)  
Math 8 or Algebra I  
Science 8  
Social Studies 8

### Physical Education/Health (Required)

Physical Education/Health (.5)  
Cheerleading/Health (1.0)  
Dance Team/Health (1.0)

### Academic Support

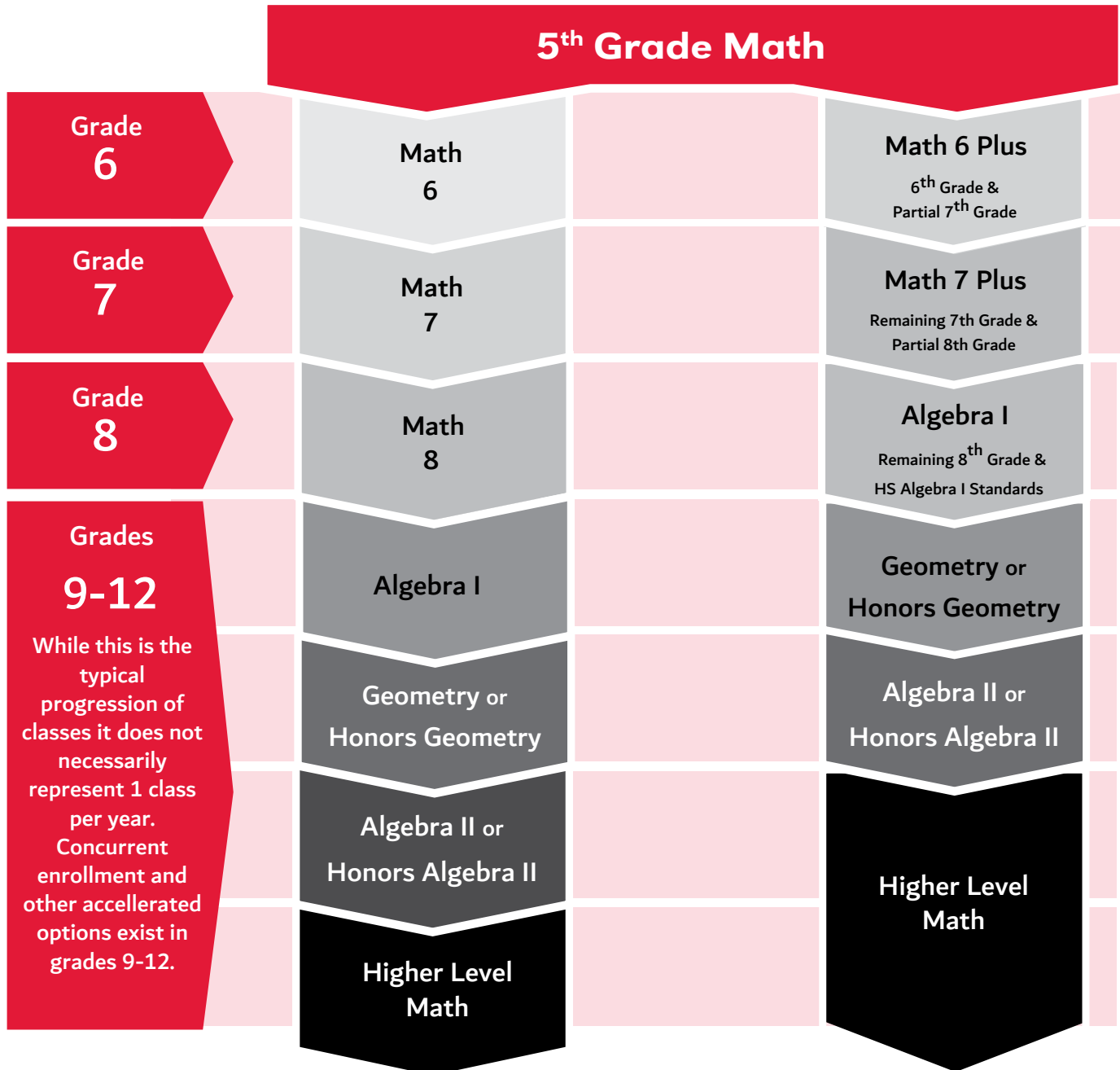
ELL  
Guided Study  
QUEST (gifted)  
Resource

### Elective Courses

AIM 8 (1.0)  
Art I (.5)  
Art II (.5)  
Art III (.5)  
Automation and Robotics (.5)  
Band 8 (1.0)  
Career and Life Planning (.5)  
Choir - Tenor/Bass (1.0)  
Choir - Treble (1.0)  
Choir Ensemble (1.0)  
Communications/Multi-Media (.5 or 1.0)  
Computer Applications I (.5)  
Computer Applications II (.5)  
Design & Modeling (.5)  
Focus on French (.5)  
Focus on Spanish (.5)  
French I (1.0)  
Introduction to Computer Coding (.5)  
Introduction to Apparel Production (.5)  
Introduction to Culinary I (.5)  
Introduction to Culinary II (.5)  
Introduction to Fashion, Apparel & Interior Design (FAID) (.5)  
Introduction to Materials & Processes (.5)  
Jazz Band (.5)  
Leadership Concepts (.5)  
Leadership Exploration (.5)  
Orchestra 8 (1.0)  
Spanish I (1.0)  
Spanish for Heritage Speakers (.5)  
Stagecraft (.5)  
Theatre I (.5)  
Theatre II (.5)  
Yearbook (.5-1.0)

**Electives are offered based on student request and building staffing. Not all electives may be offered in every building.**

# Secondary Math Course Sequence



## Higher Level Math Courses Offered For College Credit:

- College Algebra (Year-Long course)
- Pre-Calculus (Year-Long course)
- AP Calculus (AB/BC) (Year-Long course)
- AP Statistics (Year-Long course)  
(AP Statistics may be taken concurrently during Senior Year)

## Higher Level Math Courses Not Offered For College Credit:

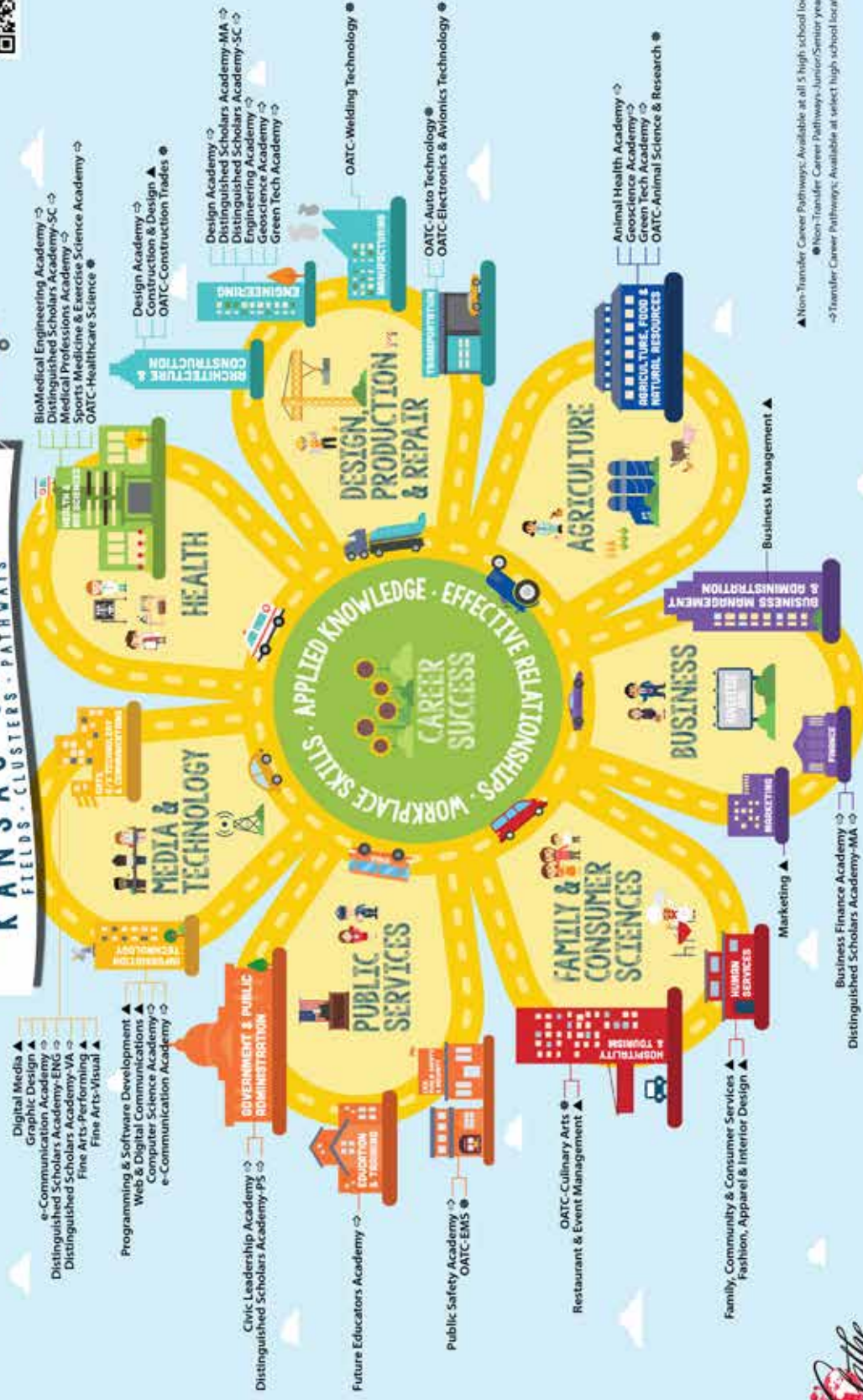
- Linear Algebra (Semester Course)
- Multivariable Calculus (Semester Course)

Students in the non-accelerated pathway have all options and opportunities available to them in high school and college. Being on a regular math pathway does not limit a student and being on an accelerated math pathway does not provide an advantage for 21st century academies or college admission.





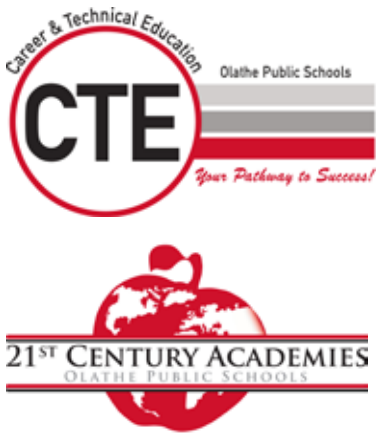
## KANSAS CAREERS FIELDS · CLUSTERS · PATHWAYS



▲ Non-Transfer Career Pathways: Available at all 5 high school locations.  
● Non-Transfer Career Pathways: Junior/Senior year only  
→ Transfer Career Pathways: Available at select high school locations.

Revised 10/26/2023





## Middle School Courses that lead to High School Career Pathways or 21st Century Academies

Students often wonder what courses they can take in middle school in order to be prepared for a high school career pathway or 21st century academy. The best preparation for participation in these courses at the high school level is to learn as much as possible in ALL classes while in middle school and learn study skills that will facilitate success in all future areas. If searching for electives, the list below can be used as a guide. If you do not see a pathway or 21st century academy that you are interested in listed below, don't worry. Although there is not a middle school elective class with a direct link to that area, all middle school electives will help prepare for eventual participation. Undecided students are encouraged to try a world language or a fine arts elective which prepares for all high school options.

### Aviation Electronics Pathway

Automation & Robotics  
Computers 6  
Computer Applications I & II  
Design & Modeling  
Flight & Space  
Introduction to Computer Coding  
Introduction to Materials & Processes

### BioMedical Engineering Academy

Automation & Robotics  
Computer 6  
Computer Applications I & II  
Design & Modeling  
Introduction to Materials and Processes

### Business Finance Pathway

Math 6,7,8

### Civic Leadership Academy

Leadership Today 6  
Leadership Concepts  
Leadership Exploration

### Computer Science Academy

Computer 6  
Computer Applications I & II  
Introduction to Computer Coding

### Construction & Design Pathway

Design & Modeling  
Introduction to Fashion, Apparel & Interior Design (FAID)  
Introduction to Materials & Processes

### Design Academy

Art I & II & III  
Automation & Robotics  
Design & Modeling  
Exploring Art  
Introduction to Fashion, Apparel & Interior Design (FAID)  
Introduction to Materials & Processes

### Digital Media Pathway

Art I & II & III  
Communications/Multi-Media 6  
Computers 6  
Communications/Multi-Media  
Computer Applications I & II  
Yearbook

### e-Communication Academy

Communication/Multi-Media 6  
Communications/Multi-Media  
Computer 6  
Computer Applications I & II

### Energy Pathway

Computer 6  
Computer Applications I & II  
Design & Modeling  
Flight & Space  
Introduction to Materials & Processes

### Engineering Academy & Engineering & Applied Mathematics Pathway

Automation & Robotics  
Design & Modeling  
Flight & Space  
Introduction to Materials and Processes

### Family, Community & Consumer Services Pathway

Career and Life Planning  
Focus on FACS

### Fashion, Apparel, Interior Design (F.A.I.D.) Pathway

Art I & II & III  
Focus on FACS  
Introduction to Apparel Production  
Introduction to Fashion, Apparel, & Interior Design (FAID)

### Future Educators Academy & Government & Public Administration Pathway

Career and Life Planning

### Green Tech Academy

Automation & Robotics  
Design & Modeling  
Flight & Space  
Introduction to Materials & Processes

### Manufacturing & Production Pathway & Mobile Equipment Maintenance

Design & Modeling  
Introduction to Materials & Processes

### Program & Software Development Pathway

Computer 6  
Computer Applications I & II  
Introduction to Computer Coding

### Public Safety Academy

Focus on Spanish  
Spanish 6  
Spanish I

### Restaurant & Event Management Pathway

Focus on FACS  
Introduction to Culinary I & II

### Teaching/Training

Career and Life Planning  
Focus on FACS

### Visual Arts—FAID—Fashion, Apparel, Interior Design Pathway

Focus on FACS  
Introduction to Apparel Production  
Introduction to Fashion, Apparel, & Interior Design (FAID)

### Graphic Design Pathway AND Web & Digital Communications Pathway

Art I & II & III  
Communication/Multi-Media 6  
Communications/Multi-Media  
Computer 6  
Computer Applications I & II

**For science-based academies (Animal Health, Geoscience, Medical Professions, and Sports Medicine & Exercise Science) not listed above,**

students are advised to focus on their core classes, especially math and science classes. Additionally, having experience with technology and computer programming is recommended.

**Distinguished Scholars should excel in one or more of the following areas:**

English 6,7,8  
Exploring Art 6, Stagecraft 7,8, Art I, II, III  
Math 6,7,8  
Science 6,7,8  
Social Studies 6,7,8

# Grade 6 Courses - Required

## CORE

### Language Arts 6

LA 000 A/B

Grade Level: 6  
Two Semesters - 1.0 credit

This course is the beginning of the secondary language arts program. It includes the study of literature and relevant informational text. Effective reading, writing, speaking and listening, and language skills are developed through reading and analyzing complex text. Students will produce argumentative, informational/explanatory, and narrative writing for a variety of purposes.

### Math 6

MA 000 A/B

Grade Level: 6  
Two Semesters - 1.0 credit

This course focuses on mathematical practices and four critical areas of content: 1) connecting fractions to ratio and rate along with solving problems; 2) completing understanding of division of fractions and extending the notion of number to the system of rational numbers, which includes negative numbers; 3) writing, interpreting, and using expressions and equations; and 4) developing understanding of statistical thinking. This course stresses the depth and rigor for future math course success.

### Math 6 Plus

MA 006 A/B

Grade Level: 6  
Two Semesters - 1.0 credit

This course combines all of the Kansas College and Career Standards for Mathematics for Grade 6 and some Grade 7 standards into one course. The standards are bundled by units from decimal computation to algebraic skills such as equations and expressions. The mathematical practices are applied to proportional reasoning, operations with rational numbers, linear equations, and real-world applications. **Enrollment Note: Students will be placed in this course based on the following district criteria: 1) district and state assessment results, 2) MAP scores, 3) current course performance.**

### Science 6

SC 000 A/B

Grade Level: 6  
Two Semesters - 1.0 credit

This course will introduce students to basic chemistry, along with an exploration of earth-space concepts and human body systems. Conducted in a laboratory setting, this course emphasizes investigative science and activity-based learning.

### Social Studies 6

SS 000 A/B

Grade Level: 6  
Two Semesters - 1.0 credit

This course focuses on an exploration of ancient world civilizations through the lens of history, geography, economics, religion and government. Students examine primary and secondary sources to investigate ancient world history using historical thinking skills.

### Literacy 6

LA 120

Grade Level: 6  
One Semester - 0.5 credit

This course is designed to support and extend the learning in the core Language Arts course. Instruction focuses on reading strategies, increasing volume of reading in a variety of genres, building academic conversations, and the critical thinking required in high school Language Arts courses, including Honors and Advanced Placement. **Enrollment Note: Students are placed into this class based upon district criteria.**

### Reading 6

WW 349  
WW 349 A/B

Grade Level: 6  
One or Two Semesters - 0.5-1.0 credit

This course is designed to improve basic reading skills including foundational skills, fluency, vocabulary, and comprehension. **Enrollment Note: Students are placed into this class based on district criteria.**

## Academic Support

### Guided Study

YA 290  
YA 290 A/B

Grade Level: 6  
One or Two Semesters - 0.5-1.0 credit

Students needing additional instructional time to master academic concepts may be assigned to this course. Students seeking time to complete coursework may also enroll. **Enrollment Note: Students are placed into this class based on district criteria.**

## Physical Education & Health

### Physical Education/Health

PE 010 A/B

Grade Level: 6  
Two Semesters - 1.0 credit

The goal of Physical Education/Health is to develop physically and healthy individuals who have the knowledge, skills and confidence to enjoy a lifetime of healthful physical activity and engage in healthful behaviors.



# Grade 6 Courses - Electives

9

## Band 6 PA 000 A/B

Grade Level: 6  
Two Semesters - 1.0 credit

Students may have had prior band experience in 5th grade or start as beginners with band director approval. **Enrollment Note: Throughout the year, attendance is required at performances and rehearsals, which may be scheduled before/after school, in the evening and on weekends. Regular at-home practice will be required as a graded assignment. Students must provide their own instrument. A uniform purchase may be required. Financial assistance is available to those who qualify.**

## Choir PA 100 A/B

Grade Level: 6  
One or Two Semesters - 0.5-1.0 credit

Students will discover the joy of singing while building relationships that last a lifetime. Singers will build confidence and skills that prepare them for future success. **Enrollment Note: Throughout the year, attendance is required at performances and rehearsals, which may be scheduled before/after school, in the evening, and on weekends. Home practice may be required as a graded assignment. A uniform purchase may be required. Financial assistance is available to those who qualify.**

## Communications/Multi-Media 6 LA 135

Grade Level: 6  
One Quarter - 0.25 credit

This course will expose students to increased speech, interpersonal communications, media, and introductory journalism skills. Writing skills will also be addressed.

## Computer 6 CP 000

Grade Level: 6  
One Quarter - 0.25 credit

Impress your friends and family with the newest and most exciting technologies! This course introduces students to the basic areas of technology through the use of fun projects and activities such as: Web 2.0 tools, Paint, email, internet, Microsoft Word, Excel, PowerPoint, Publisher, and typing skills. This is a great class that prepares students for future computer courses.

## Exploring Art AR 000

Grade Level: 6  
One Quarter - 0.25 credit

Students will explore a variety of 2-D and 3-D media. Basic techniques and an overview of artistic materials will be stressed. The emphasis will be on developing the student's creativity and imagination.

## Flight & Space IT 020

Grade Level: 6  
One Quarter - 0.25 credit

The exciting world of aerospace comes alive through the Flight and Space class. Students become engineers as they design, prototype, and test models to learn about the science of flight and what it takes to travel and live in space. Students will solve real-world aviation and space challenges.

## Focus on FACS HE 000

Grade Level: 6  
One Quarter - 0.25 credit

This course introduces students to basic cooking & nutrition, basic sewing, and personal/family relationships. Additionally, students will learn child care while learning to be a good friend and family member along with related career opportunities.

## French 6 FL 000

Grade Level: 6  
One Quarter - 0.25 credit

This course introduces students to the French language and culture around the world. Students learn vocabulary and phrases related to daily life and personal interests.

## Leadership Today 6 YA 295

Grade Level: 6  
One Quarter - 0.25 credit

This course examines past and present leaders in a variety of fields. Students are introduced to leadership skills and concepts.

## Orchestra 6 PA 060 A/B

Grade Level: 6  
Two Semesters - 1.0 credit

Students may have had prior orchestra experience in 5th grade or start as beginners. **Enrollment Note: Attendance is required at all rehearsals and performances. Regular at-home practice will be required as a graded assignment. Students on violin, viola, and cello must furnish their own instrument. A uniform purchase may be required. Financial assistance is available to those who qualify.**

## Spanish 6 FL 010

Grade Level: 6  
One Quarter - 0.25 credit

This course introduces students to the Spanish language and the Hispanic culture around the world. Students learn vocabulary and phrases related to daily life and personal interests.

## Theatre 6 PA 150M

Grade Level: 6  
One Quarter - 0.25 credit

Enter the thrilling and interactive world of theatre. This class will help build self-confidence and creative expression through introductory acting techniques, dramatic movement and vocal work.

## World Language Exploratory FL 006

Grade Level: 6  
One Quarter - 0.25 credit

This course provides students with both a linguistic and cultural overview of languages around the world. Topics include writing systems, phonology, gestures, geography, and customs. Students will be provided with a brief overview of multiple world languages. Students will gain knowledge about the use and structure of various languages and the places where these languages are spoken. Students will learn basic greetings and ways to communicate in multiple languages during the span of the course.

# Grade 7 Courses - Required

## CORE

### Language Arts 7

LA 010 A/B

Grade Level: 7  
Two Semesters - 1.0 credit

This course includes the study of literature and relevant informational text. Effective reading, writing, speaking and listening, and language skills are developed through reading and analyzing complex text. Students will produce argumentative, informational/explanatory, and narrative writing for a variety of purposes.

### Math 7

MA 010 A/B

Grade Level: 7  
Two Semesters - 1.0 credit

This course emphasizes mathematical practices applied to the following critical areas: developing understanding and application of proportional relationships, operations with rational numbers, working with expressions and linear equations, solving problems involving scale drawings and geometric constructions, as well as working with 2D and 3D shapes to solve problems involving area, surface area, and volume.

### Math 7 Plus

MA 017 A/B

Grade Level: 7  
Two Semesters - 1.0 credit  
Prerequisite: Math 6 Plus

This course combines the remainder of the Kansas College and Career Standards for Mathematics for Grade 7 and the majority of the Grade 8 Standards into one course. The standards are bundled by units from real number computation to algebraic skills such as equations and functions. The mathematical practices are applied to the real number system, equations, statistic and probability, geometry, and real-world applications.

### Science 7

SC 010 A/B

Grade Level: 7  
Two Semesters - 1.0 credit

This course will explore life processes and environmental studies. Conducted in a laboratory setting, this course emphasizes investigative science and activity-based learning.

### Social Studies 7

SS 010 A/B

Grade Level: 7  
Two Semesters - 1.0 credit

This course includes a semester of world geography and a semester of Kansas history and government. Students examine primary and secondary sources to investigate world geography and Kansas history and government using historical thinking skills.

### Literacy 7

LA 121

Grade Level: 7  
One Semester - 0.5 credit

This course is designed to support and extend the learning in the core Language Arts course. Instruction focuses on reading strategies, increasing volume of reading in a variety of genres, building academic conversations, and the critical thinking required in high school Language Arts courses, including Honors and Advanced Placement. **Enrollment Note: Students are placed into this class based upon district criteria.**

### Reading 7

WW 350  
WW 350 A/B

Grade Level: 7  
One or Two Semesters - 0.5-1.0 credit

This course offers intensive instruction to improve basic reading skills in terms of comprehension, vocabulary, and fluency based on individual student needs. Students will also choose reading material based on interest and reading level. **Enrollment Note: Students are placed into this class based on district criteria.**

## Academic Support

### Guided Study

YA 290  
YA 290 A/B

Grade Level: 7  
One or Two Semesters - 0.5-1.0 credit

Students needing additional instructional time to master academic concepts may be assigned to this course. Students seeking time to complete coursework may also enroll. **Enrollment Note: Students are placed into this class based on district criteria.**

## Physical Education & Health

### Cheerleading/Health

PE 140 A/B

Grade Level: 7, 8  
Two Semesters - 1.0 credit

Admission to this course is by audition only. Grades and citizenship must be in compliance with the Kansas State High School Activities Association. The class emphasizes cheerleading skills and technique, conditioning, leadership, and squad unity. This course satisfies the physical education requirement. The health curriculum will also be delivered to students enrolled in this course.

### Dance Team/Health

PE 150 A/B

Grade Level: 7, 8  
Two Semesters - 1.0 credit

Admission to this course is by audition only. Grades and citizenship must be in compliance with the Kansas State High School Activities Association in order to audition. The class includes choreographing and learning routines, performing at various functions, and attending extra rehearsals. This course satisfies the physical education requirement. The health curriculum will also be delivered to students enrolled in this course.

### Physical Education/Health

PE 110

Grade Level: 7  
One Semester - 0.5 credit

The goal of Physical Education/Health is to develop physically and healthy individuals who have the knowledge, skills and confidence to enjoy a lifetime of healthful physical activity and engage in healthful behaviors.

# Grade 7 Courses - Electives

11

## Art I AR 110M

Grade Level: 7, 8  
One Semester - 0.5 credit

This introductory art course is designed to provide seventh and eighth grade students an opportunity to experience drawing, painting, printmaking, ceramics, and sculpture. The Elements of Art, artists, and art history will provide a framework for this experience.

## Art II AR 120

Grade Level: 7, 8  
One Semester - 0.5 credit  
Prerequisite: Art I

This course is designed for both seventh and eighth grade students who will be building on what they learned in Art 1. There will be an emphasis on the Elements of Art and Principles of Design while creating a variety of 2-D and 3-D projects.

## Automation & Robotics IT 395

Grade Level: 7, 8  
One Semester - 0.5 credit

Students learn about the history and impact of automation and robotics as they explore mechanical systems, energy transfer, machine automation, and computer control systems. Using the VEX Robotics® platform, students apply what they know to design and program traffic lights, robotic arms, and more.

## Band 7 PA 020 A/B

Grade Level: 7  
Two Semesters - 1.0 credit  
Prerequisite: Band 6 or permission by instructor

This course is open to all 7th grade band students and focuses on the continued development of instrument and performance techniques. **Enrollment Note: Throughout the year, attendance is required at performances and rehearsals, which may be scheduled before/after school, in the evening and on weekends. Regular at-home practice will be required as a graded assignment. Students must provide their own instrument. A uniform purchase may be required. and financial assistance is available for those who qualify.**

## Career and Life Planning HE 200P

Grade Level: 7, 8  
One Semester - 0.5 credit

This class develops knowledge and skills and explores attitudes needed for success in school and the workplace. Students explore topics relating to identifying their own interests, career possibilities, pre-employment skills, workplace skills, and educational goals. This class will have guest speakers. Students in this class are introduced to the career clusters and Olathe's High School Pathway and Academy options.

## Choir Ensemble PA 145 A/B

Grade Level: 7, 8  
Two Semesters - 1.0 credit

This advanced choral experience focuses on progressive ensemble skills, vocal techniques, and music literacy skills. Independent singing, vocal technique, and sight singing skills will be developed. **Enrollment Note: An audition may be required for this course. Throughout the year, attendance is required at performances and rehearsals which may be scheduled before/after school, in the evening, and on weekends. Home practice may be required as a graded assignment. A uniform purchase may be required. and financial assistance is available for those who qualify.**

## Choir - Tenor/Bass PA 120 A/B

Grade Level: 7, 8  
Two Semesters - 1.0 credit

This class focuses on intermediate to advanced study of vocal technique, sight singing, and ensemble performance practices. **Enrollment Note: An audition may be required for this course. Throughout the year, attendance is required at performances and rehearsals which may be scheduled before/after school, in the evening, and on weekends. Home practice may be required as a graded assignment. A uniform purchase may be required. Financial assistance is available for those who qualify.**

## Choir - Treble PA 140 A/B

Grade Level: 7, 8  
Two Semesters - 1.0 credit

This class focuses on advanced study of vocal technique, sight singing, and ensemble performance practices. **Guided Enrollment Note: Throughout the year, attendance is required at performance and rehearsals, which may be scheduled before/after school, in the evening, and on weekends. Home practice may be required as a graded assignment. A uniform purchase may be required but financial assistance is available for those who qualify.**

## Communications/Multi-Media LA 140

Grade Level: 7, 8  
One Semester - 0.5 credit

The focus of this course is improving communication skills through oral and written language. Students will study journalism, write articles, and produce the school newspaper.

## Computer Applications I CP 200P

Grade Level: 7, 8  
One Semester - 0.5 credit

Students will acquire digital literacy skills essential for future success. Emphasis will be on formatting documents in word processing, spreadsheets, and presentations. Course content is updated frequently to reflect new technologies.

# Grade 7 Courses - Electives

## Computer Applications II

CP 210P

Grade Level: 7, 8  
One Semester - 0.5 credit  
Prerequisite: Computer Applications I

Students will gain advanced skills in word processing, spreadsheets, and presentations. Integrated projects will be completed to help students relate their learning to real-world and relevant situations. Course content is updated frequently to reflect new technologies.

## Design & Modeling

IT 391

Grade Level: 7, 8  
One Semester - 0.5 credit

Students discover the design process and develop an understanding of the influence of creativity and innovation in their lives. They are then challenged and empowered to use and apply what they've learned throughout the class to design a product with a real-world impact.

## Focus on French

FL 100

Grade Level: 7, 8  
One Semester - 0.5 credit

Students explore French countries, focusing on their cultural differences, holidays, and customs. Students interact with vocabulary and phrases related to daily life and personal interests.

## Focus on Spanish

FL 110

Grade Level: 7, 8  
One Semester - 0.5 credit

Students explore Spanish-speaking countries, focusing on their cultural differences, holidays, and customs. Students interact with vocabulary and phrases related to daily life and personal interests.

## Introduction to Computer Coding

CP 120P

Grade Level: 7, 8  
One Semester - 0.5 credit

This course will allow students to discover computer science concepts and skills by creating projects and developing mobile apps. Students will learn about programming by blending hardware design and software development. Students will customize their experience by choosing a problem that interests them.

## Introduction to Apparel Production

HE 160

Grade Level: 7, 8  
One Semester - 0.5 credit

This introductory level course gives students an opportunity to learn the basics of sewing and proper machine use. Students will learn safe use of a sewing machine and specific equipment, textile selection, and basic construction techniques. Through hands-on projects and presentations students will learn how to create designs for home and personal use.  
**Enrollment Note: Students will furnish their own supplies for individual projects.**

## Introduction to Culinary I

HE 130

Grade Level: 7, 8  
One Semester - 0.5 credit

This course will introduce students to skills and knowledge in the areas of kitchen and meal management. Safety, sanitation, lab management, and nutrition are emphasized in each unit. Cooking lab experiences will include baking, preparing protein, fresh produce, and international foods.

## Introduction to Culinary II

HE 140

Grade Level: 7, 8  
One Semester - 0.5 credit

Students will learn proper cooking and preparation techniques, scientific principles relating to recipes, and the role each plays in a healthy diet. Basics of kitchen management and safety are integral to each preparation lab. Healthy food choices are emphasized in each unit.

## Introduction to Fashion, Apparel & Interior Design (FAID)

HE 170

Grade Level: 7, 8  
One Semester - 0.5 credit

This introductory level course gives students an opportunity to learn the basics of the design industry with special focus on fashion, interiors and apparel. Through hands-on projects and presentations, students will learn about the basics of color, fashion history, design principles, textile selection, fashion basics, entrepreneurship and careers in design fields.  
**Enrollment Note: Students will furnish their own supplies for individual projects.**

## Jazz Band

PA 050

Grade Level: 7, 8  
One Semester - 0.5 credit  
Prerequisite: Band 6 or permission by instructor

Concurrent enrollment in Band 7/8 or Orchestra 7/8 is required. This course provides students with strong fundamental skills covered in the concert band classes, with an introduction to various jazz styles, solo improvisation, and performance opportunities.  
**Enrollment Note: Throughout the year, attendance is required at performances and rehearsals, which may be scheduled before/after school, in the evening and on weekends. Regular at-home practice will be required as a graded assignment. Students must provide their own instrument. A uniform purchase may be required. Financial assistance is available for those who qualify.**

## Leadership Concepts

YA 300

Grade Level: 7, 8  
One Semester - 0.5 credit

This class introduces students to the various types of leaders and models of leadership. Students will participate in team building activities and develop their knowledge of leadership skills and concepts. Students will research and propose solutions to building-level issues.

# Grade 7 Courses - Electives

13

## Orchestra 7

PA 070 A/B

Grade Level: 7

Two Semesters - 1.0 credit

Prerequisite: Orchestra 6 or permission by instructor

This course is open to all students who play violin, viola, cello and string bass. Students should be starting their third year of instruction.

**Enrollment Note: Attendance is required at all rehearsals and performances. Regular at-home practice will be required as a graded assignment. Students on violin, viola, and cello must furnish their own instrument. A uniform purchase may be required. Financial assistance is available for those who qualify.**

## Spanish for Heritage Speakers

FL 120

Grade Level: 7, 8

One Semester - 0.5 credit

This course is designed specifically for students who have already gained speaking and listening proficiency in Spanish in a home or other community setting or in a previous school setting outside of the United States. Students will strengthen their reading and writing skills in Spanish through study and discussion of language structure, cultural and current events, and academic language. This class is conducted entirely in Spanish. Students may be asked to complete a language assessment to determine proper placement in this course. **Enrollment Note: Students may take this course in both 7th and 8th grade if desired. This course may not be offered at all middle schools.**

## Stagecraft

PA 180

Grade Level: 7, 8

One Semester - 0.5 credit

Students will take a look behind the scenes in this technical theatre course. Students get hands-on experience with design, scenic painting, costumes, makeup, prop construction, and other aspects of production work.

## Theatre I

PA 160

Grade Level: 7, 8

One Semester - 0.5 credit

Explore the multi-faceted world of theatre in this introductory class. Students will cultivate self-expression and confidence through a collaborative look at movement, acting techniques, and performance. Students will also improve their creative thinking and analytical skills through scriptwriting and interpretation.

## Theatre II

PA 190

Grade Level: 7, 8

One Semester - 0.5 credit

Prerequisite: Theatre I

This class is an in-depth course that builds upon the skills and techniques learned in Theatre I. This class will challenge students' leadership and creativity as they collaborate in theatre projects such as scene work, playwriting, play production, script analysis, and character development.



# Grade 8 Courses - Required

## CORE

### Algebra I

MA 520 A/B

Grade Level: 8  
Two Semesters - 1.0 credit  
Prerequisite: Math 7 Plus

Students engage in methods for analyzing, solving, and using quadratic functions. Students experience mathematics as a coherent, useful, and logical subject that makes use of problem solving skills. Students will analyze and explain the process of solving an equation as well as write, interpret, and translate between various forms of linear equations and inequalities.

### Language Arts 8

LA 110 A/B

Grade Level: 8  
Two Semesters - 1.0 credit

This course includes the study of literature and relevant informational text. Effective reading, writing, speaking and listening, and language skills are developed through reading and analyzing complex text. Students will produce argumentative, informational/explanatory, and narrative writing for a variety of purposes.

### Math 8

MA 110 A/B

Grade Level: 8  
Two Semesters - 1.0 credit

Students continue to build an algebra foundation from earlier grades. This course embeds the mathematical practices throughout learning. Instruction will focus on an in-depth study of expressions and equations leading to linear equations. The concept of a function will be formalized to prepare students for Algebra 1. The course ends with geometric concepts of angles, distance, similarity, scatter plots, congruence and applying the Pythagorean Theorem.

### Science 8

SC 110 A/B

Grade Level: 8  
Two Semesters - 1.0 credit

This course explores the science of the dynamic earth and the universe, along with an integration of basic chemistry. Conducted in a laboratory setting, this course emphasizes investigative science and activity-based learning.

### Social Studies 8

SS 110 A/B

Grade Level: 8  
Two Semesters - 1.0 credit

This course focuses on American history from the end of the American Revolution to 1900. Students examine primary and secondary sources to investigate American history using historical thinking skills.

### Literacy 8

LA 122

Grade Level: 8  
One Semester - 0.5 credit

This course is designed to support and extend the learning in the core Language Arts course. Instruction focuses on reading strategies, increasing volume of reading in a variety of genres, building academic conversations, and the critical thinking required in high school Language Arts courses, including Honors and Advanced Placement. **Enrollment Note: Students are placed into this class based upon district criteria.**

### Reading 8

WW 351  
WW 351 A/B

Grade Level: 8  
One or Two Semesters - 0.5-1.0 credit

This course offers intensive instruction to improve basic reading skills in terms of comprehension, vocabulary, and fluency based on individual student needs. Students will also choose reading material based on interest and reading level. **Enrollment Note: Students are placed into this class based on district criteria.**

## Academic Support

### Guided Study

YA 290  
YA 290 A/B

Grade Level: 8  
One or Two Semesters - 0.5-1.0 credit

Students needing additional instructional time to master academic concepts may be assigned to this course. Students seeking time to complete coursework may also enroll. **Enrollment Note: Students are placed into this class based on district criteria.**

## Physical Education & Health

### Cheerleading/Health

PE 140 A/B

Grade Level: 7, 8  
Two Semesters - 1.0 credit

Admission to this course is by audition only. Grades and citizenship must be in compliance with the Kansas State High School Activities Association. The class emphasizes cheerleading skills and technique, conditioning, leadership, and squad unity. This course satisfies the physical education requirement. The health curriculum will also be delivered to students enrolled in this course.

### Dance Team/Health

PE 150 A/B

Grade Level: 7, 8  
Two Semesters - 1.0 credit

Admission to this course is by audition only. Grades and citizenship must be in compliance with the Kansas State High School Activities Association in order to audition. The class includes choreographing and learning routines, performing at various functions, and attending extra rehearsals. This course satisfies the physical education requirement. The health curriculum will also be delivered to students enrolled in this course.

### Physical Education/Health

PE 120 M

Grade Level: 8  
One Semester - 0.5 credit

The goal of Physical Education/Health is to develop physically and healthy individuals who have the knowledge, skills and confidence to enjoy a lifetime of healthful physical activity and engage in healthful behaviors.

# Grade 8 Courses - Electives

15

## AIM 8

WW 441 A/B

Grade Level: 8  
Two Semesters - 1.0 credit

This course is an elective class for students who are college-bound. Students learn college and career readiness skills to enhance academic success. Students will set goals, learn about time management and note-taking skills, create a four-year high school academic plan and work effectively in collaborative groups while learning about future college and career options. **Enrollment Note: Students are placed into this class based on district criteria. This course may not be offered at all middle schools.**

## Art I

AR 110M

Grade Level: 7, 8  
One Semester - 0.5 credit

This introductory art course is designed to provide seventh and eighth grade students an opportunity to experience drawing, painting, printmaking, ceramics, and sculpture. The elements of art, artists, and art history will provide a framework for this experience.

## Art II

AR 120

Grade Level: 7, 8  
One Semester - 0.5 credit  
Prerequisite: Art I

This course will be an emphasis on the elements of art and principles of design while creating a variety of 2-D and 3-D projects.

## Art III

AR 130

Grade Level: 8  
One Semester - 0.5 credit  
Prerequisite: Art II

This advanced class offers an in-depth examination of the creative process. Eighth grade students who would like to take an additional art class may enroll in this class again with instructor permission.

## Automation & Robotics

IT 395

Grade Level: 7, 8  
One Semester - 0.5 credit

Students learn about the history and impact of automation and robotics as they explore mechanical systems, energy transfer, machine automation, and computer control systems. Using the VEX Robotics® platform, students apply what they know to design and program traffic lights, robotic arms, and more.

## Band 8

PA 030 A/B

Grade Level: 8  
Two Semesters - 1.0 credit  
Prerequisite: Band 7 or permission by instructor

This course is open to all 8th grade band students and focuses on the advanced study of instrument and performance techniques. **Enrollment Note: Throughout the year, attendance is required at performances and rehearsals, which may be scheduled before/after school, in the evening and on weekends. Regular at-home practice will be required as a graded assignment. Students must provide their own instrument. A uniform purchase may be required. Financial assistance is available for those who qualify.**

## Career and Life Planning

HE 200P

Grade Level: 8  
One Semester - 0.5 credit

This class develops knowledge and skills and explores attitudes needed for success in school and the workplace. Students explore topics relating to identifying their own interests, career possibilities, pre-employment skills, workplace skills, and educational goals. This class will have guest speakers. Students in this class are introduced to the career clusters and Olathe's High School Pathway and Academy options. **Enrollment Note: Cannot be repeated from 7th Grade**

## Choir Ensemble

PA 145 A/B

Grade Level: 7, 8  
Two Semesters - 1.0 credit

This advanced choral experience focuses on progressive ensemble skills, vocal techniques, and music literacy skills. Independent singing, vocal technique, and sight singing skills will be developed. **Enrollment Note: An audition may be required for this course. Throughout the year, attendance is required at performances and rehearsals which may be scheduled before/after school, in the evening, and on weekends. Home practice may be required as a graded assignment. A uniform purchase may be required. Financial assistance is available for those who qualify.**

## Choir - Tenor/Bass

PA 120 A/B

Grade Level: 7, 8  
Two Semesters - 1.0 credit

This class focuses on intermediate to advanced study of vocal technique, sight singing, and ensemble performance practices. **Enrollment Note: An audition may be required for this course. Throughout the year, attendance is required at performances and rehearsals which may be scheduled before/after school, in the evening, and on weekends. Home practice may be required as a graded assignment. A uniform purchase may be required, and financial assistance is available for those who qualify.**

## Choir - Treble

PA 140 A/B

Grade Level: 7, 8  
Two Semesters - 1.0 credit

This class focuses on advanced study of vocal technique, sight singing, and ensemble performance practices. **Guided Enrollment Note: Throughout the year, attendance is required at performance and rehearsals, which may be scheduled before/after school, in the evening, and on weekends. Home practice may be required as a graded assignment. A uniform purchase may be required but financial assistance is available for those who qualify.**

# Grade 8 Courses - Electives

## Communications/Multi-Media

LA 140  
LA 140 A/B

Grade Level: 7, 8  
One or Two Semesters - 0.5-1.0 credit

The focus of this course is improving communication skills through oral and written language. Students will study journalism, write articles, and produce the school newspaper.

## Yearbook

LA 240  
LA 240 A/B

Grade Level: 8  
One or Two Semesters - 0.5-1.0 credit

This course exposes students to increased communications, media, and introductory journalism skills, including producing the school yearbook.

## Computer Applications I

CP 200P

Grade Level: 7, 8  
One Semester - 0.5 credit

Students will acquire digital literacy skills essential for future success. Emphasis will be on formatting documents in word processing, spreadsheets, and presentations. Course content is updated frequently to reflect new technologies. **Enrollment Note: Course cannot be repeated from 7th Grade.**

## Computer Applications II

CP 210P

Grade Level: 7, 8  
One Semester - 0.5 credit  
Prerequisite: Computer Applications I

Students will gain advanced skills in word processing, spreadsheets, and presentations. Integrated projects will be completed to help students relate their learning to real-world and relevant situations. Course content is updated frequently to reflect new technologies. **Enrollment Note: Course cannot be repeated from 7th Grade.**

## Design & Modeling

IT 391

Grade Level: 7, 8  
One Semester - 0.5 credit

Students discover the design process and develop an understanding of the influence of creativity and innovation in their lives. They are then challenged and empowered to use and apply what they've learned throughout the class to design a product with a real-world impact.

## Focus on French

FL 100

Grade Level: 7, 8  
One Semester - 0.5 credit

Students explore French countries, focusing on their cultural differences, holidays, and customs. Students interact with vocabulary and phrases related to daily life and personal interests.

## Focus on Spanish

FL 110

Grade Level: 7, 8  
One Semester - 0.5 credit

Students explore Spanish-speaking countries, focusing on their cultural differences, holidays, and customs. Students interact with vocabulary and phrases related to daily life and personal interests.

## French I

FL 410M A/B

Grade Level: 8  
Two Semesters - 1.0 credit

This class is designed for students who have had little or no experience learning French. Students learn about the French culture and learn to communicate in the context of ordinary, daily situations. In order to promote language proficiency, much of this class is taught in French. Students who complete this course continue to French II. **Enrollment Note: Students must take French 1 in 8th grade if they plan to enroll in AP French their senior year in high school. \*Beginning in the 2024-25 school year - Students in 8th grade who enroll in Spanish I or French I will earn high school credit. Those courses will be included on their high school transcript and cannot be removed. Credits will be added after the start of the student's ninth grade year.**

## Introduction to Computer Coding

CP 120P

Grade Level: 8  
One Semester - 0.5 credit

This course will allow students to discover computer science concepts and skills by creating projects and developing mobile apps. Students will learn about programming by blending hardware design and software development. Students will customize their experience by choosing a problem that interests them. **Enrollment Note: Course cannot be repeated from 7th Grade.**

## Introduction to Apparel Production

HE 160

Grade Level: 7, 8  
One Semester - 0.5 credit

This introductory level course gives students an opportunity to learn the basics of sewing and proper machine use. Students will learn safe use of a sewing machine and specific equipment, textile selection, and basic construction techniques. Through hands-on projects and presentations students will learn how to create designs for home and personal use. **Enrollment Note: Students will furnish their own supplies for individual projects.**

## Introduction to Culinary I

HE 130

Grade Level: 7, 8  
One Semester - 0.5 credit

This course will introduce students to skills and knowledge in the areas of kitchen and meal management. Safety, sanitation, lab management, and nutrition are emphasized in each unit. Cooking lab experiences will include baking, preparing protein, fresh produce, and international foods.

# Grade 8 Courses - Electives

17

## Introduction to Culinary II

HE 140

Grade Level: 7, 8  
One Semester - 0.5 credit

Students will learn proper cooking and preparation techniques, scientific principles relating to recipes, and the role each plays in a healthy diet. Basics of kitchen management and safety are integral to each preparation lab. Healthy food choices are emphasized in each unit.

## Introduction to Fashion, Apparel & Interior Design (FAID)

HE 170

Grade Level: 7, 8  
One Semester - 0.5 credit

This introductory level course gives students an opportunity to learn the basics of the design industry with special focus on fashion, interiors and apparel. Through hands-on projects and presentations students will learn about the basics of color, fashion history, design principles, textile selection, fashion basics, entrepreneurship and careers in design fields. **Enrollment Note: Students will furnish their own supplies for individual projects.**

## Introduction to Materials & Processes

IT 210

Grade Level: 8  
One Semester - 0.5 credit

This course is designed for students with an interest in woods, metals, plastics, and related technologies. After an introduction involving drafting, machine and shop safety, students fabricate projects using basic drawings and equipment.

## Jazz Band

PA 050

Grade Level: 7, 8  
One Semester - 0.5 credit  
Prerequisite: Band 6 or permission by instructor

Concurrent enrollment in Band 7/8 or Orchestra 7/8 is required. This course provides students with strong fundamental skills covered in the concert band classes, with an introduction to various jazz styles, solo improvisation, and performance opportunities. **Enrollment Note: Throughout the year, attendance is required at performances and rehearsals, which may be scheduled before/after school, in the evening and on weekends. Regular at-home practice will be required as a graded assignment. Students must provide their own instrument. A uniform purchase may be required. Financial assistance is available for those who qualify.**

## Leadership Concepts

YA 300

Grade Level: 7, 8  
One Semester - 0.5 credit

This class introduces students to the various types of leaders and models of leadership. Students will participate in team building activities and develop their knowledge of leadership skills and concepts. Students will research and propose solutions to building-level issues.

## Leadership Explorations

YA 306

Grade Level: 8  
One Semester - 0.5 credit

Students will assess and define their personal leadership style. Students participate in team building activities and further develop their own leadership skills. Students research and present a social advocacy project.

## Orchestra 8

PA 080 A/B

Grade Level: 8  
Two Semesters - 1.0 credit  
Prerequisite: Orchestra 7 or permission by instructor

This course is open to all students who play violin, viola, cello and string bass. Students should be starting their fourth year of instruction. **Enrollment Note: Attendance is required at all rehearsals and performances. Regular at-home practice will be required as a graded assignment. Students on violin, viola, and cello must furnish their own instrument. A uniform purchase may be required. Financial assistance is available for those who qualify.**

## Spanish I

FL 610M A/B

Grade Level: 8  
Two Semesters - 1.0 credit

This class is designed for students who have had little or no experience learning Spanish. Students learn about the Hispanic culture and to communicate in the context of ordinary, daily situations. In order to promote language proficiency, much of this class is taught in Spanish. Students who complete this course continue to Spanish II. **Enrollment Note: Students must take Spanish 1 in 8th grade if they plan to enroll in AP Spanish their senior year in high school. \*Beginning in the 2024-25 school year - Students in 8th grade who enroll in Spanish I or French I will earn high school credit. Those courses will be included on their high school transcript and cannot be removed. Credits will be added after the start of the student's ninth grade year.**

## Spanish for Heritage Speakers

FL 120

Grade Level: 7, 8  
One Semester - 0.5 credit

This course is designed specifically for students who have already gained speaking and listening proficiency in Spanish in a home or other community setting or in a previous school setting outside of the United States. Students will strengthen their reading and writing skills in Spanish through study and discussion of language structure, cultural and current events, and academic language. This class is conducted entirely in Spanish. Students may be asked to complete a language assessment to determine proper placement in this course. **Enrollment Note: Students may take this course in both 7th and 8th grade if desired. This course may not be offered at all middle schools.**

# Grade 8 Courses - Electives

**Stagecraft**

PA 180

Grade Level: 7, 8  
One Semester - 0.5 credit

Students will take a look behind the scenes in this technical theatre course. Students get hands-on experience with design, scenic painting, costumes, makeup, prop construction, and other aspects of production work.

**Theatre I**

PA 160

Grade Level: 7, 8  
One Semester - 0.5 credit

Explore the multi-faceted world of theatre in this introductory class. Students will cultivate self-expression and confidence through a collaborative look at movement, acting techniques, and performance. Students will also improve their creative thinking and analytical skills through scriptwriting and interpretation.

**Theatre II**

PA 190

Grade Level: 7, 8  
One Semester - 0.5 credit  
Prerequisite: Theatre I

This class is an in-depth course that builds upon the skills and techniques learned in Theatre I. This class will challenge students' leadership and creativity as they collaborate in theatre projects such as scene work, playwriting, play production, script analysis, and character development.







CALIFORNIA TRAIL



CHISHOLM TRAIL



FRONTIER TRAIL



INDIAN TRAIL



MISSION TRAIL



OREGON TRAIL



PRAIRIE TRAIL



PIONEER TRAIL



SANTA FE TRAIL



SUMMIT TRAIL



**Notice of Non-Discrimination:** The Olathe Public Schools prohibit discrimination on the basis of race, color, ethnicity, national origin, sex, disability, age, religion, sexual orientation or gender identity in its programs, activities or employment, and provides equal access to the Boy Scouts and other designated youth groups to its facilities as required by: Title IX of the Education Amendments of 1972, Title VI and Title VII of the Civil Rights Act of 1964, the Age Discrimination Act of 1975, the Americans with Disabilities Act (ADA), the Individuals with Disabilities Education Act, Section 504 of the Rehabilitation Act of 1973, the Equal Access Act of 1984 and other relevant state and federal laws as amended. Inquiries regarding compliance with applicable civil rights statutes related to race, ethnicity, gender, age discrimination, sexual orientation, gender identity or equal access may be directed to Staff Counsel, 14160 S. Black Bob Road, Olathe, KS 66063-2000, phone 913-780-7000. All inquiries regarding compliance with applicable statutes regarding Section 504 of the Rehabilitation Act and the Individuals with Disabilities Education Act and the Americans with Disabilities Act may be directed to the Executive Director of Special Services, 14160 S. Black Bob Rd. Olathe, KS 66063-2000, phone (913) 780-7000. Interested persons including those with impaired vision or hearing, can also obtain information as to the existence and location of services, activities and facilities that are accessible to and usable by disabled persons by calling the Assistant Superintendent, Operations. (05/22)